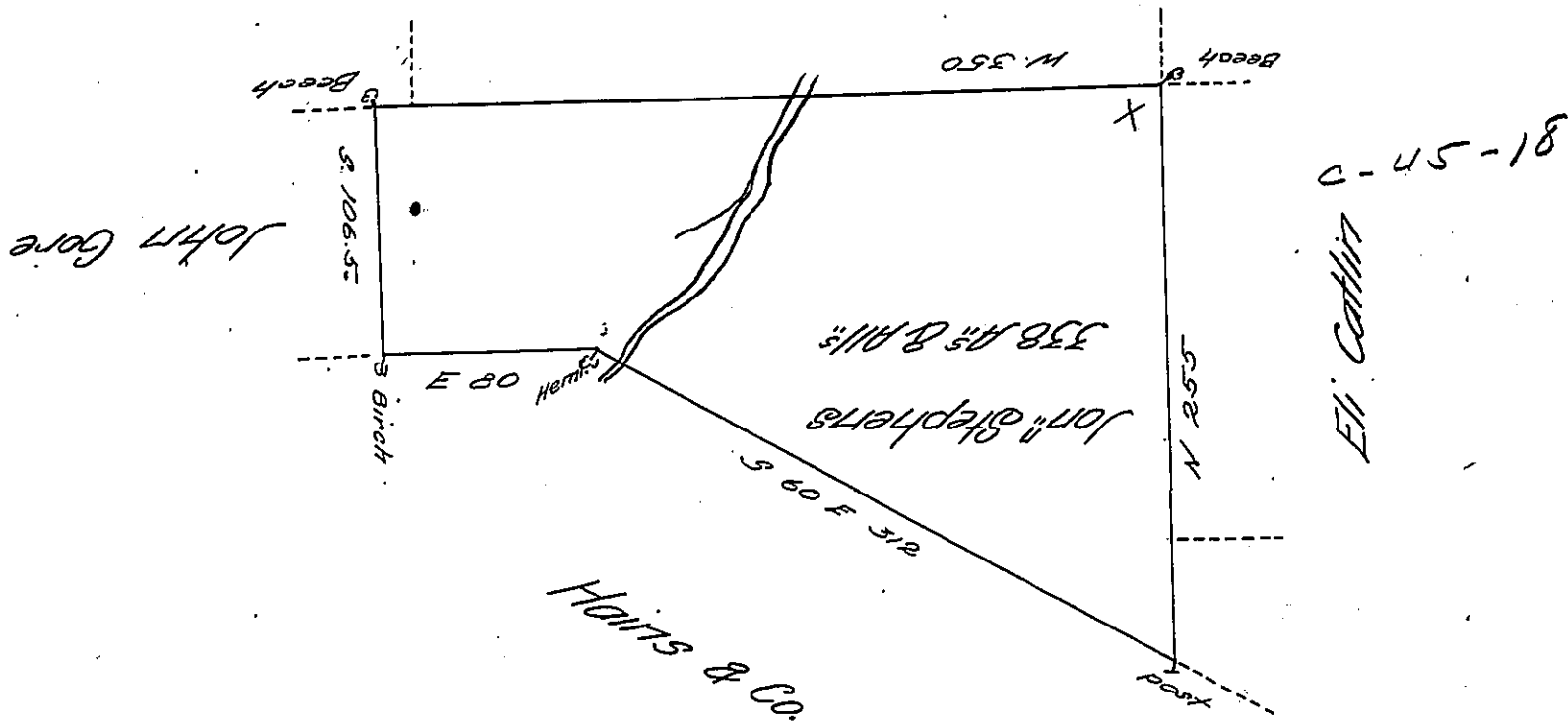


Thos Baldwin



By Virtue of a Warr^t dated 20th Aug^r 1792 Surveyed the 10th of August 1793 Unto Jonathan Stephens the above described Tract of Three hundred and thirty eight Acres of Land and Allow^e situated on a branch of Sugar Creek westwardly from the mouth of said Creek in Luzerne County

By W^m Montgomery D.S.
Jo. J. Wallis D.S.

To Daniel Brodhead Esq^r
Surv^r Gen^l of Pennsylv^a

33.

IN TESTIMONY that the above is a copy of the original remaining on file in the Department of Internal Affairs of Pennsylvania, made conformably to an Act of Assembly approved the 16th day of February 1833, I have hereunto set my hand and caused the Seal of said Department to be affixed at Harrisburg, this twenty-third day of January 1907

Loac B. Brown
Secretary of Internal Affairs.